

A young boy is captured mid-jump, falling into a lake. He is shirtless and wearing dark shorts, with his arms raised high in the air. The water is calm with gentle ripples. In the background, there is a dense line of green trees under a bright, hazy sky. The overall mood is one of summer fun and relaxation.

LAKE Groomer

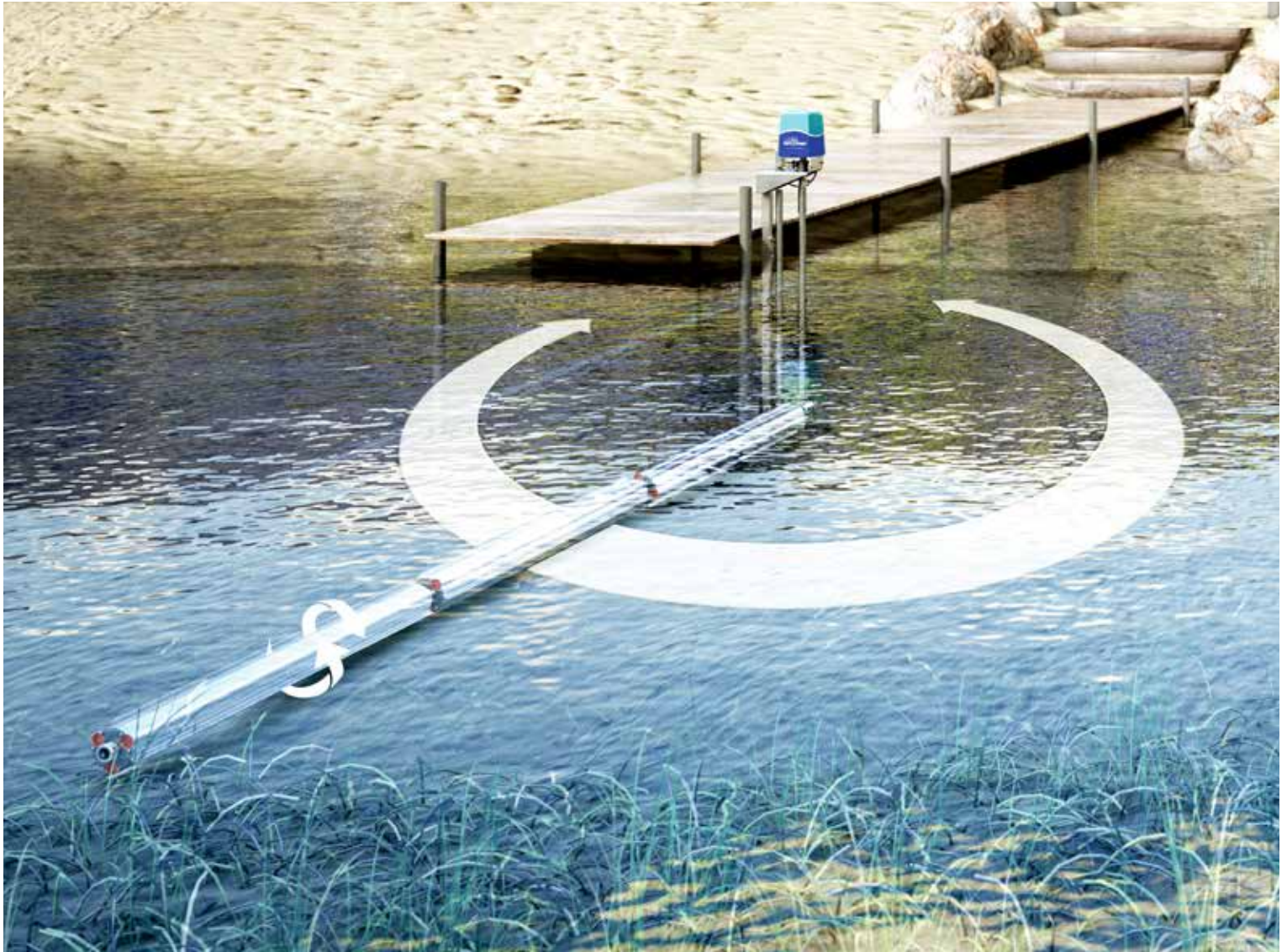
WWW.LAKEGROOMER.COM

No weeds. No muck. No labor. **Just sit back and enjoy your beach!**

Say Goodbye to Weeds and Muck!

With Lake Groomer, you'll spend less time maintaining your lakeshore and more time enjoying it! Lake Groomer's rolling action dislodges weeds and cleans loose sediment for a weed-free and muck-free beach without the need for harsh chemicals.

Lake Groomer is simple to install and can stand alone or mount to a dock. Position Lake Groomer wherever you want to control weeds and muck for improved boat access and a swimming area your whole family will love!



Experience the **Lake Groomer Difference**

Power Share Program

Use the Power Share Program with your neighbors! Lake Groomer can be purchased without the upper drive assembly. This allows several neighbors to easily move one power unit to different Lake Groomer installations, making the Lake Groomer an even better investment for all.

Stay Dry Installation

Lake Groomer's unique installation system features a single bracket to the dock and a base anchor that is augured from above, so you can install Lake Groomer without ever getting into the water!

For reduced weight and easier handling, you can remove the upper drive before installing, then reattach once Lake Groomer is in place.

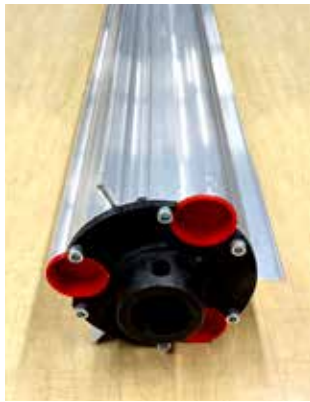
Protection Against Short Circuit

Plug the Lake Groomer into a Ground Fault Circuit Interrupter (GFCI) outlet to prevent electrical mishaps such as short circuits. The Lake Groomer also has built-in short circuit protection in the motor controller for extra protection!



Standard Specifications

- Adjustable, up to a 280 degree arc.
- Operates in up to 4.5 feet of water.
- Extendable up to 48 feet using a combination of rigid and flex connectors.
- 3 degrees of flex for each roller joint (9 degrees total with 3 rollers).



Comparison Guide

	WEED ROLLER	LAKE GROOMER
Max Height with Extension Kit	9.5 ft	10.5 ft
Length of Radius Assembled	21 ft	21 ft
Auto Reverse Sensing	Yes	Yes
Power	0.067 HP	0.167 HP
Extension Kit Depth	2.5 ft	3 ft
Number of Flexible Connectors	2	3
Installation	2 Brackets (1 Submerged)	1 Bracket
Warranty	2 Years	3 Years or 12,000 Cycles

Note: This comparison guide is based on the standard Lake Groomer Kit (700100).



EASY CONNECTOR INSTALLATION

Three flexible connectors between the rollers allow Lake Groomer to follow the contour of the lake bottom. Just one bolt is required to attach or detach the rollers, so changing your roller configuration is simple!



ADJUSTABLE ROLLER ARC

The roller path can cover an arc up to 280 degrees and is easily adjusted with the directional pucks. When they reach the end of their set arc, the rollers will automatically reverse and continue rolling.



PROGRAMMABLE CYCLES

Lake Groomer can be programmed to run a desired number of cycles, then stop by itself. With this great feature, you can set it, sit back, and enjoy your beach!



Lake Groomer Kit

LAKE GROOMER KIT (700100)

Includes upper drive assembly, lower drive assembly, three 7-foot rollers with flex connectors, dock mounting kit, and all hardware necessary for assembly and installation.

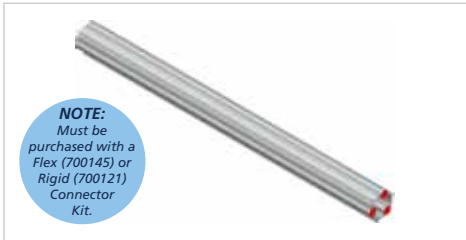
LAKE GROOMER KIT WITHOUT UPPER DRIVE ASSEMBLY (700204)

Used for Power Share Program on secondary installations. Includes lower drive assembly, three 7-foot rollers with flex connectors, dock mounting kit, and all hardware necessary for assembly and installation.



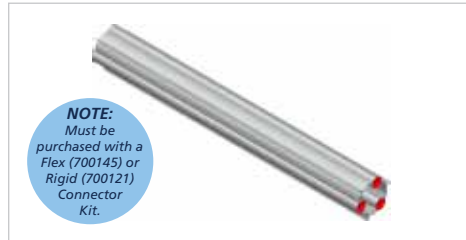
Note: Some states and localities have different regulations that may involve a permit process. Always comply with local requirements when using your Lake Groomer.

Lake Groomer Parts & Accessories



7-FOOT ROLLER EXTENSION KIT (700143)

An additional 7-foot roller to extend the reach of a standard unit.



4.5-FOOT ROLLER EXTENSION KIT (700122)

An additional 4.5-foot roller to extend the reach of a standard unit.



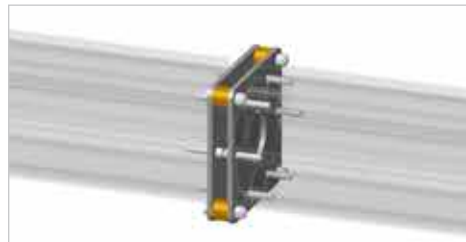
DOCK MOUNTING KIT (700125)

An additional set of mounting hardware to allow for more convenient transfer of the Lake Groomer from one dock location to another.



FLEX CONNECTOR KIT (700145)

Two couplers and one connector to join two rollers together, allowing for 3 degrees of flexibility. Adds 4-1/4 inches of length.



RIGID CONNECTOR KIT (700121)

Two plates to rigidly connect two rollers with no flexibility. Adds 1-1/4 inches of length.

Note: For flat lakebed surfaces only.



MUD KIT (700113)

A paddle to mount between rollers with flex connectors to provide traction in extreme mud conditions. Adds 4-1/2 inches of length in the middle, or 6-1/4 inches on the end.



FREESTANDING KIT (700120)

Dual auger tubes to install the Lake Groomer without securing to a dock.



DEEP WATER EXTENSION KIT (700108)

A 3-foot extension to increase maximum water depth of a standard unit from 4.5 feet to 7.5 feet; up to two extensions can be added.

Lake Groomer is a division of Eastside Machine Co.

800-234-7834

WWW.LAKEGROOMER.COM

The warranty covers a configuration of no more than four flex connections, excluding the connection to the lower drive, across a maximum length of 48 feet.

